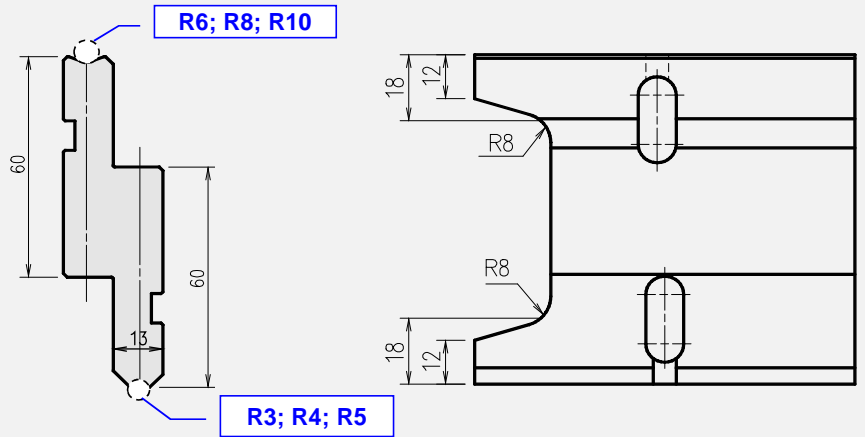
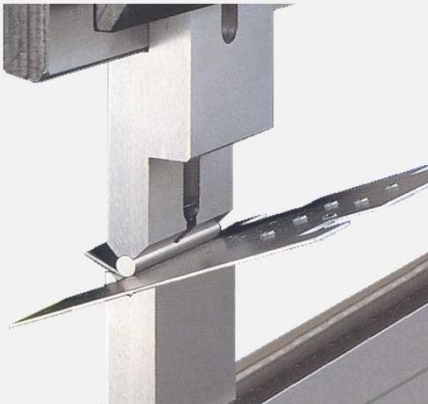


Punch Holder : 91

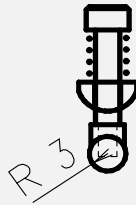
Sect. 835mm = 2x100ear
 20; 25; 30
 35; 40; 50
 70; 165; 200



Tonnage:
 - 1000 kN/m for 835 and 415 tools
 - 150 kN/m for Sect. tools

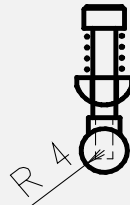
L mm	Item No.	Weight Kg
835	DX 091001	10,0
415	DX 091002	5,0
Sect.	DX 091801	10,0

R3 Insert



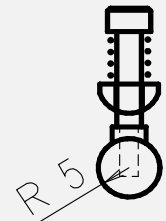
L mm	Item No.	Weight Kg
835	DX 090301	0,2
415	DX 090302	0,1
Sect.	DX 090831	0,2

R4 Insert



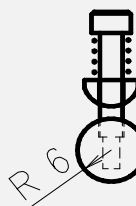
L mm	Item No.	Weight Kg
835	DX 090401	0,3
415	DX 090402	0,1
Sect.	DX 090841	0,3

R5 Insert



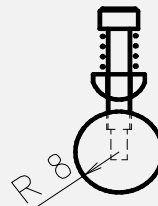
L mm	Item No.	Weight Kg
835	DX 090501	0,5
415	DX 090502	0,2
Sect.	DX 090851	0,5

R6 Insert



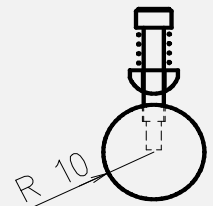
L mm	Item No.	Weight Kg
835	DX 090601	0,7
415	DX 090602	0,3
Sect.	DX 090861	0,7

R8 Insert



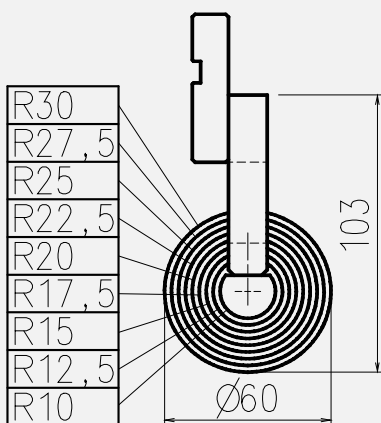
L mm	Item No.	Weight Kg
835	DX 090801	1,3
415	DX 090802	0,6
Sect.	DX 090881	1,3

R10 Insert



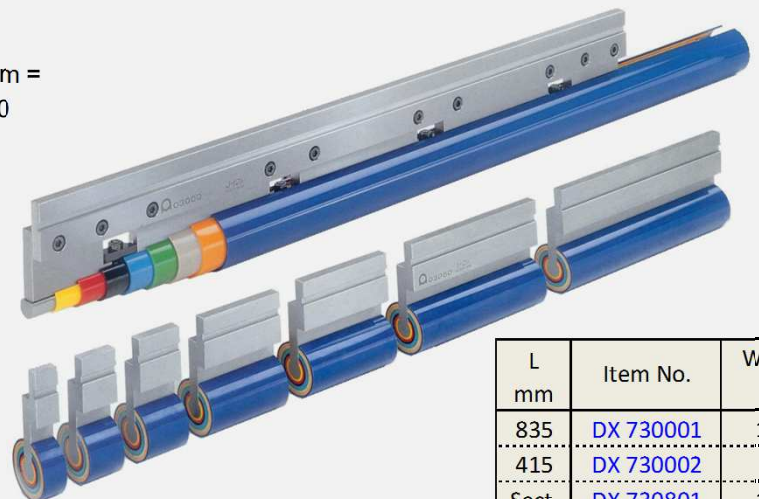
L mm	Item No.	Weight Kg
835	DX 090101	2,1
415	DX 090102	1,0
Sect.	DX 090811	2,1

Colour-Multi-Radius



Sect. 835mm =
 25; 40; 50
 100; 120
 200; 300

500 kN/m



L mm	Item No.	Weight Kg
835	DX 730001	13,0
415	DX 730002	6,4
Sect.	DX 730801	13,0