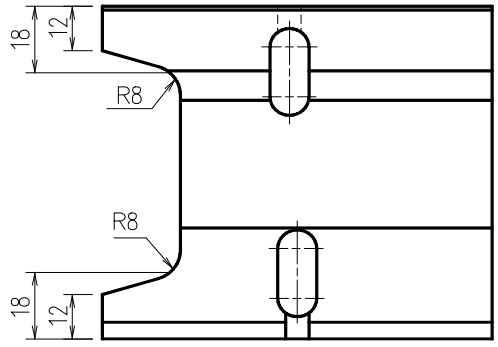
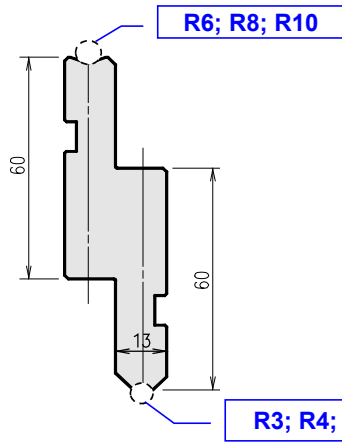
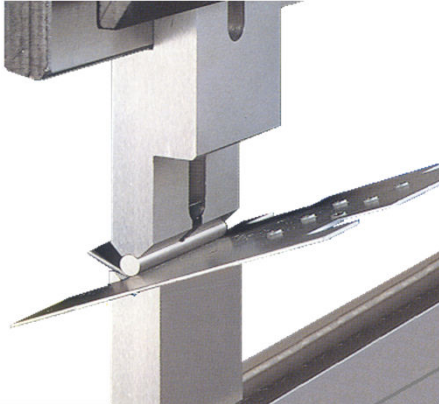


Punch Holder : 91

Sect. 835mm = 2x100ear
 20; 25; 30
 35; 40; 50
 70; 165; 200



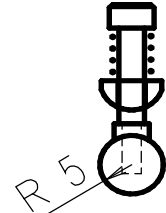
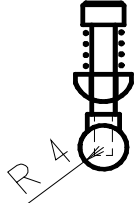
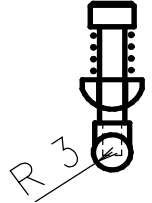
Tonnage:
 - 1000 kN/m for 835 and 415 tools
 - 150 kN/m for Sect. tools

L mm	Item No.	Weight Kg
835	DX091001	10,0
415	DX091002	5,0
Sect.	DX091801	10,0

R3 Insert

R4 Insert

R5 Insert



L mm	Item No.	Weight Kg
835	DX090301	0,2
415	DX090302	0,1
Sect.	DX090831	0,2

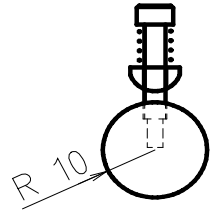
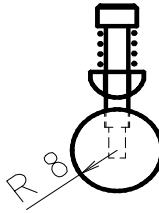
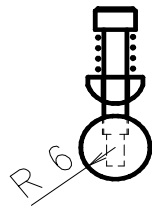
L mm	Item No.	Weight Kg
835	DX090401	0,3
415	DX090402	0,1
Sect.	DX090841	0,3

L mm	Item No.	Weight Kg
835	DX090501	0,5
415	DX090502	0,2
Sect.	DX090851	0,5

R6 Insert

R8 Insert

R10 Insert



L mm	Item No.	Weight Kg
835	DX090601	0,7
415	DX090602	0,3
Sect.	DX090861	0,7

L mm	Item No.	Weight Kg
835	DX090801	1,3
415	DX090802	0,6
Sect.	DX090881	1,3

L mm	Item No.	Weight Kg
835	DX090101	2,1
415	DX090102	1,0
Sect.	DX090811	2,1