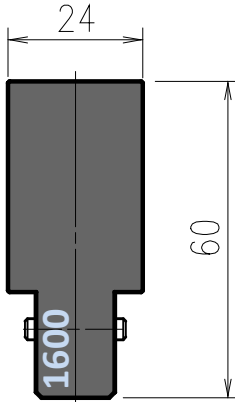


Staged Hemming Tool 1600

1000 kN/m

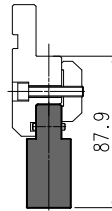


Tool 1600
replaces old
tool SF600

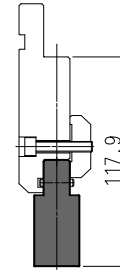
Notes:

1. Staged hemming tool is reversible and can be mounted on punch or die holder. Depending on thrust force direction tool stops are needed on punch side or on die side.
2. Flattening involves high thrust forces, therefore it's sequence always needs an intermittent stroke.
4. By using it without Tool Stop, bending length is limited, depending on material thickness

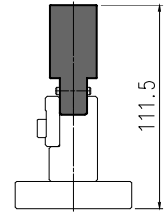
Length mm	Item No.	Weight Kg
835	ED1600001	8,0
415	ED1600002	4,0
800 sect.	ED1600003	7,7



Hemming punch H90



Hemming punch H120



Hemming die